

166 Manor Park Road
Harlesden
London
NW10 4JT
T: 020 8965 2250
E: sales@churchillmathesons.com
www.churchillmathesons.com

Churchill & Mathesons

Ellerslie Gardens, Willesden, NW10 3TB

Asking Price £360,000 Leasehold



KEY FEATURES:

- TWO DOUBLE BEDROOM
- PURPOSE BUILT
- DUPLEX MAISONETTE
- OVER 1st & 2nd FLOORS
- GAS CENTRAL HEATING
- DOUBLE GLAZING
- OWN BALCONY

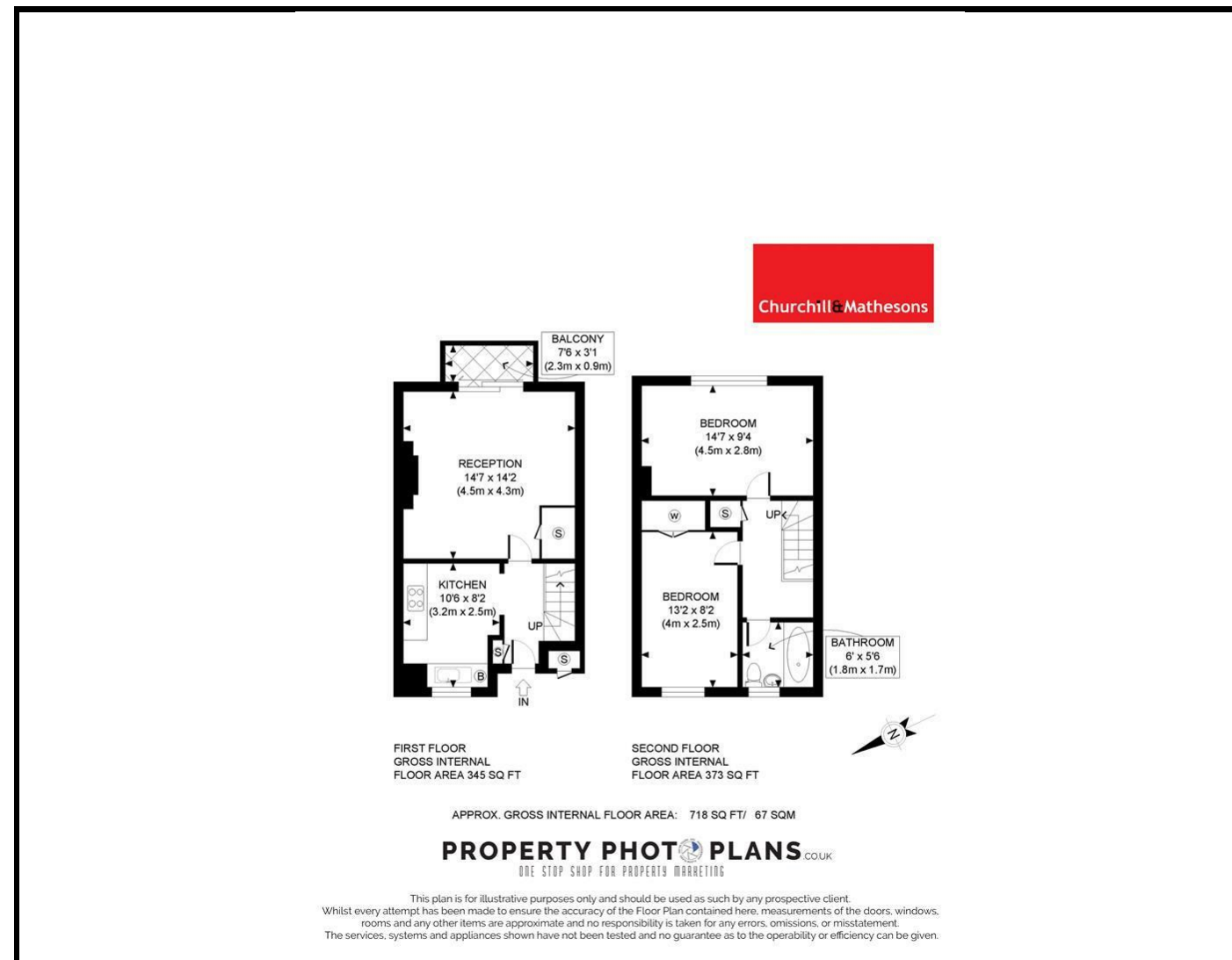
We are delighted to offer for sale this spacious TWO DOUBLE BEDROOM split level flat with own entrance in a purpose-built block, arranged over two floors.

On the first floor there is a FITTED KITCHEN and a good sized living room leading onto a PRIVATE BALCONY.

On the second floor there are TWO bedrooms and a bathroom. The block has communal gardens and residents' parking.

Ellerslie Gardens is situated on Uffington Road and is close to Roundwood Park, various schools and a choice of stations.

Council Tax Band C Local Authority Brent
GROSS INTERNAL FLOOR AREA 718 SQ FT / 67 SQM



Energy Efficiency Rating		
	Current	Potential
Very energy efficient - lower running costs		
(92 plus) A		
(81-91) B		
(69-80) C		
(55-68) D		
(39-54) E		
(21-38) F		
(1-20) G		
Not energy efficient - higher running costs		
England & Wales	EU Directive 2002/91/EC	

Environmental Impact (CO ₂) Rating		
	Current	Potential
Very environmentally friendly - lower CO ₂ emissions		
(92 plus) A		
(81-91) B		
(69-80) C		
(55-68) D		
(39-54) E		
(21-38) F		
(1-20) G		
Not environmentally friendly - higher CO ₂ emissions		
England & Wales	EU Directive 2002/91/EC	

Whilst every effort is made to give a fair description, the accuracy of these particulars is not guaranteed, neither do they constitute an offer or contract.

CHURCHILL & MATHESONS ESTATE AGENTS have not tested any apparatus, equipment, fitting or services and so cannot verify that they are in working order. The buyer is advised to obtain verification from their solicitor or surveyor. Measurements are correct to within +/- 6 A sonic tape is used. None of the statements contained in these particulars or any of our properties are to be relied upon as a representation of fact.